

# Wonderful Water

## Mangrove Ecosystems in TCI

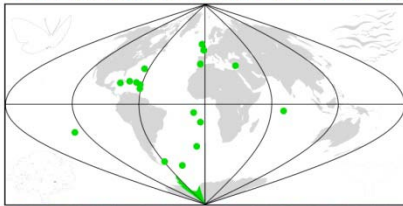
### 7. Classification of organisms in a Mangrove Ecosystem

#### Teachers' Guide

Some example identification keys



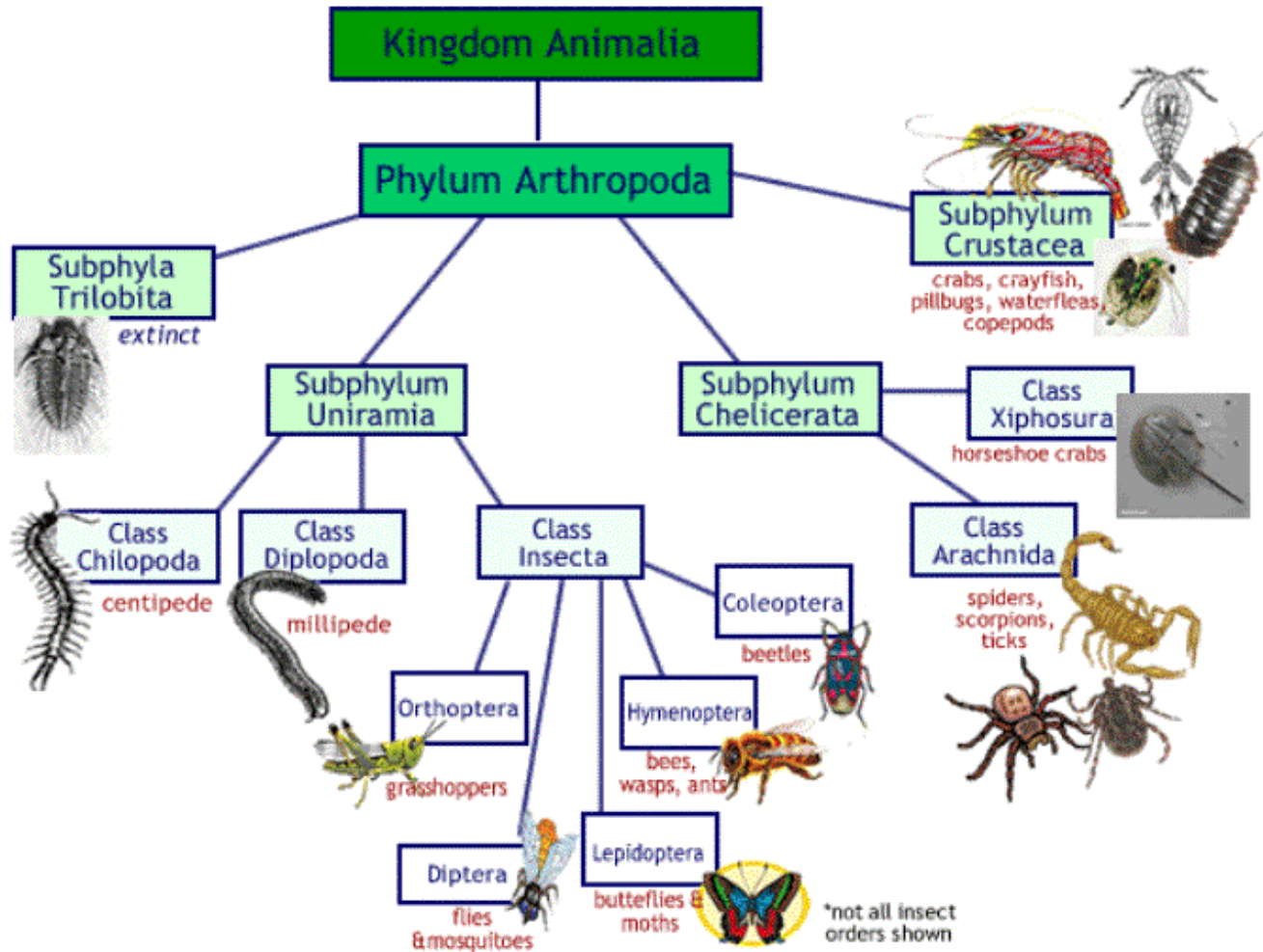
OVERSEAS TERRITORIES



CONSERVATION.UK

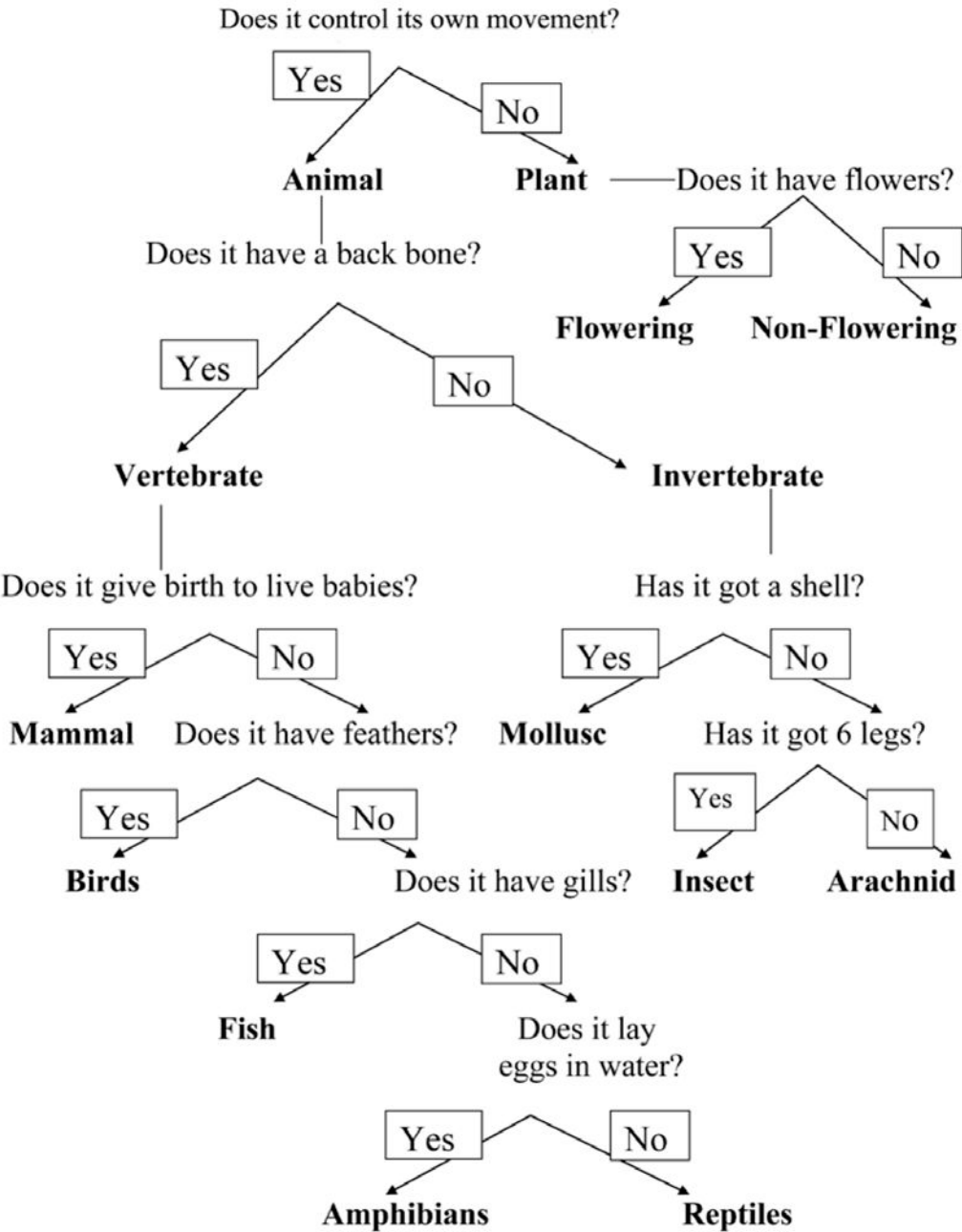


7. Classification of Organisms in a Mangrove Ecosystem – Teachers' Guide  
 Some example identification keys



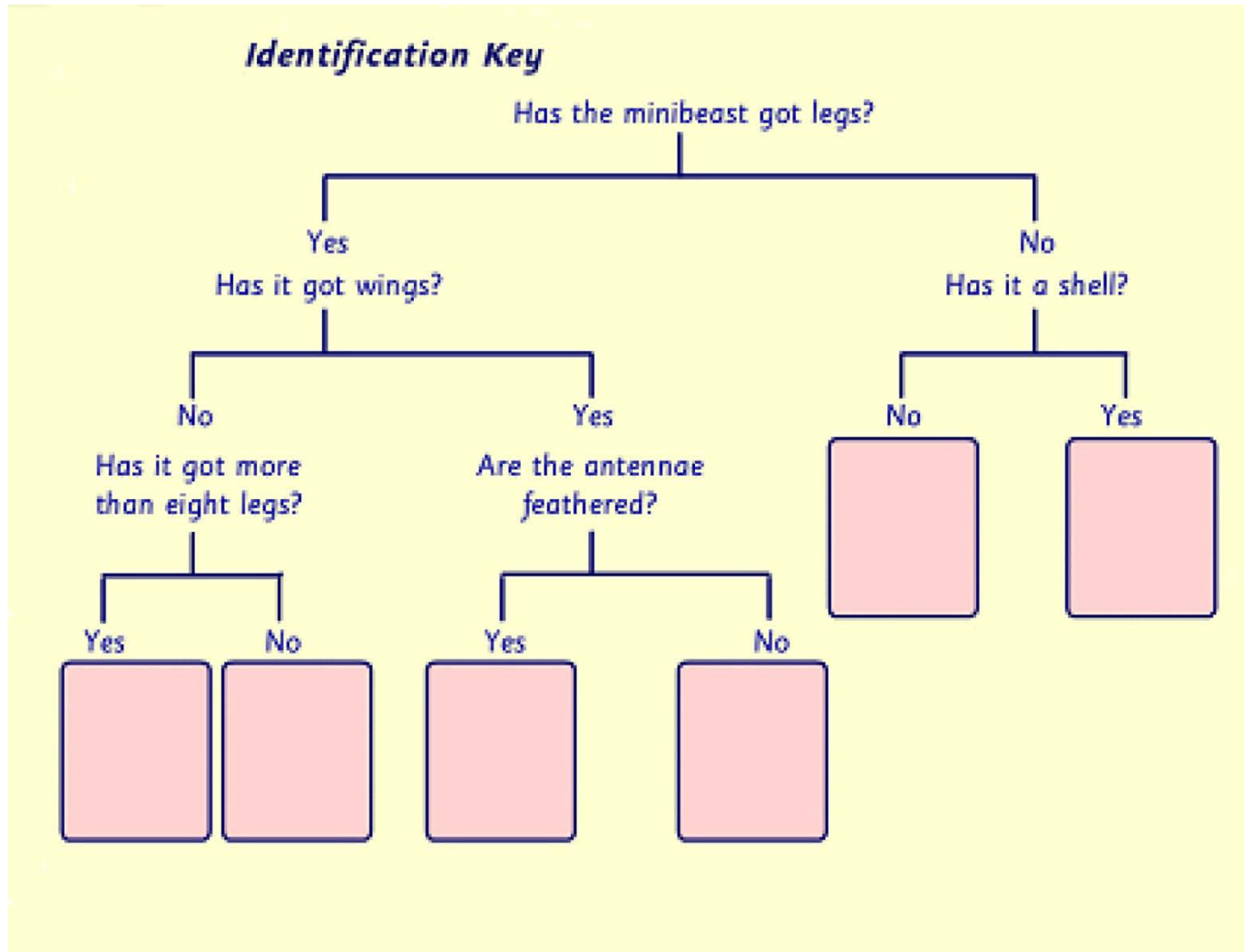
An example classification chart for the arthropods

**7. Classification of Organisms in a Mangrove Ecosystem – Teachers’ Guide**  
**Some example identification keys**



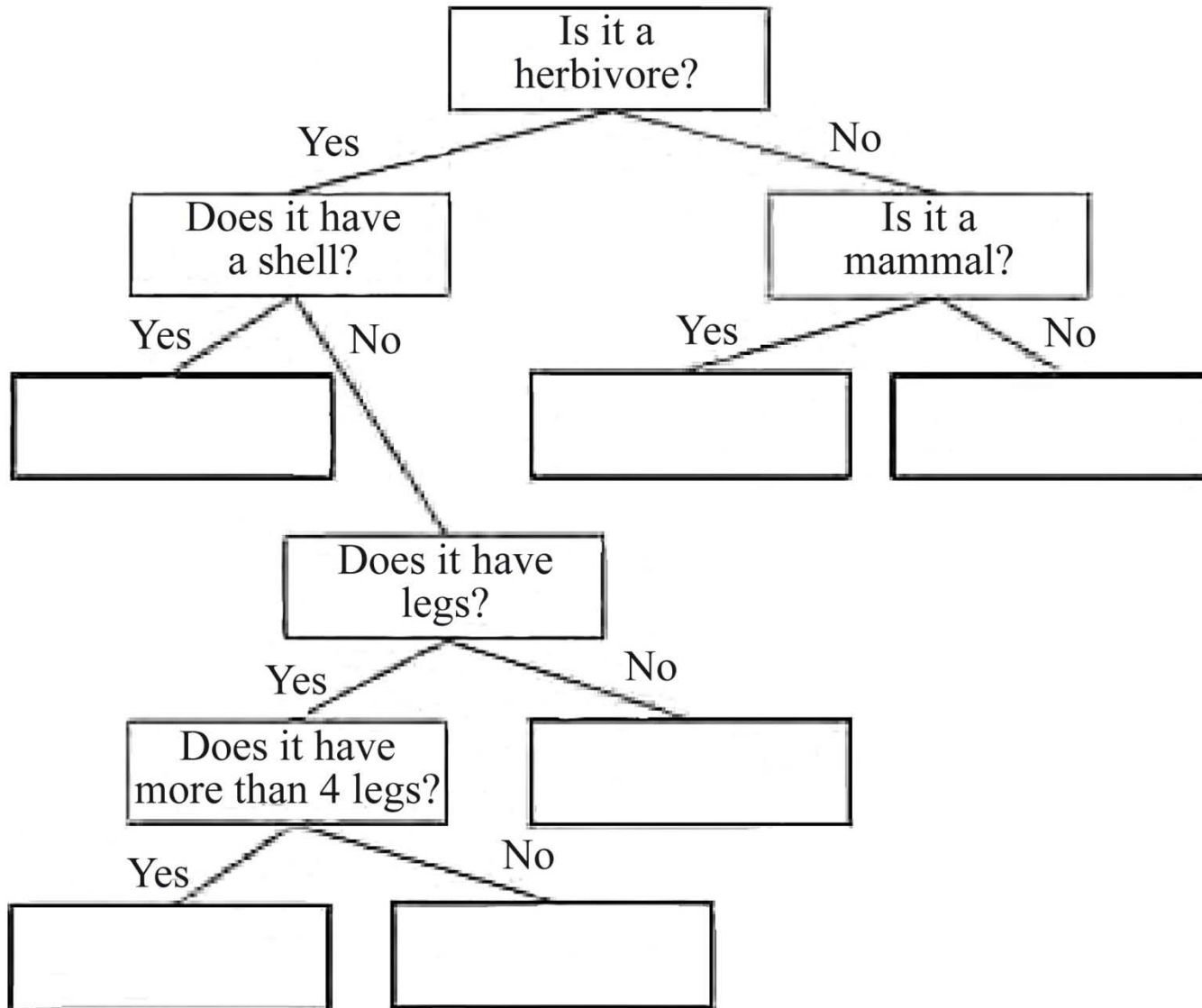
An example of a dichotomous key to separate plants and animals into major groups

7. Classification of Organisms in a Mangrove Ecosystem – Teachers' Guide  
Some example identification keys



A simple Dichotomous key for identifying a mini-beast.

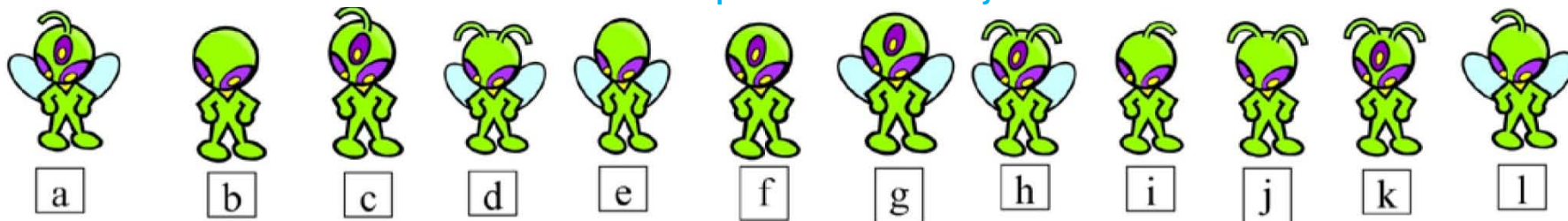
7. Classification of Organisms in a Mangrove Ecosystem – Teachers' Guide  
Some example identification keys



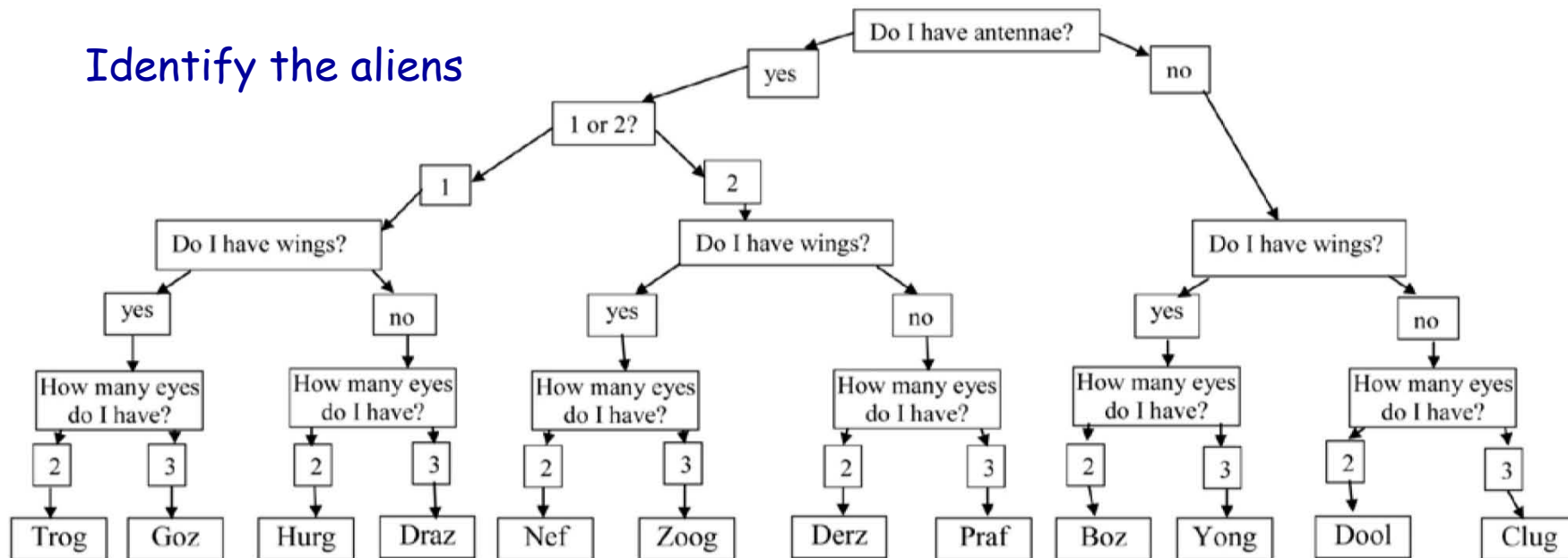
Introducing students to making their own identification key.

## 7. Classification of Organisms in a Mangrove Ecosystem – Teachers' Guide

Some example identification keys









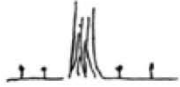













Identify the aliens



Letter	Alien's Name	Letter	Alien's Name	Letter	Alien's Name
a		e		i	
b		f		j	
c		g		k	
d		h		l	

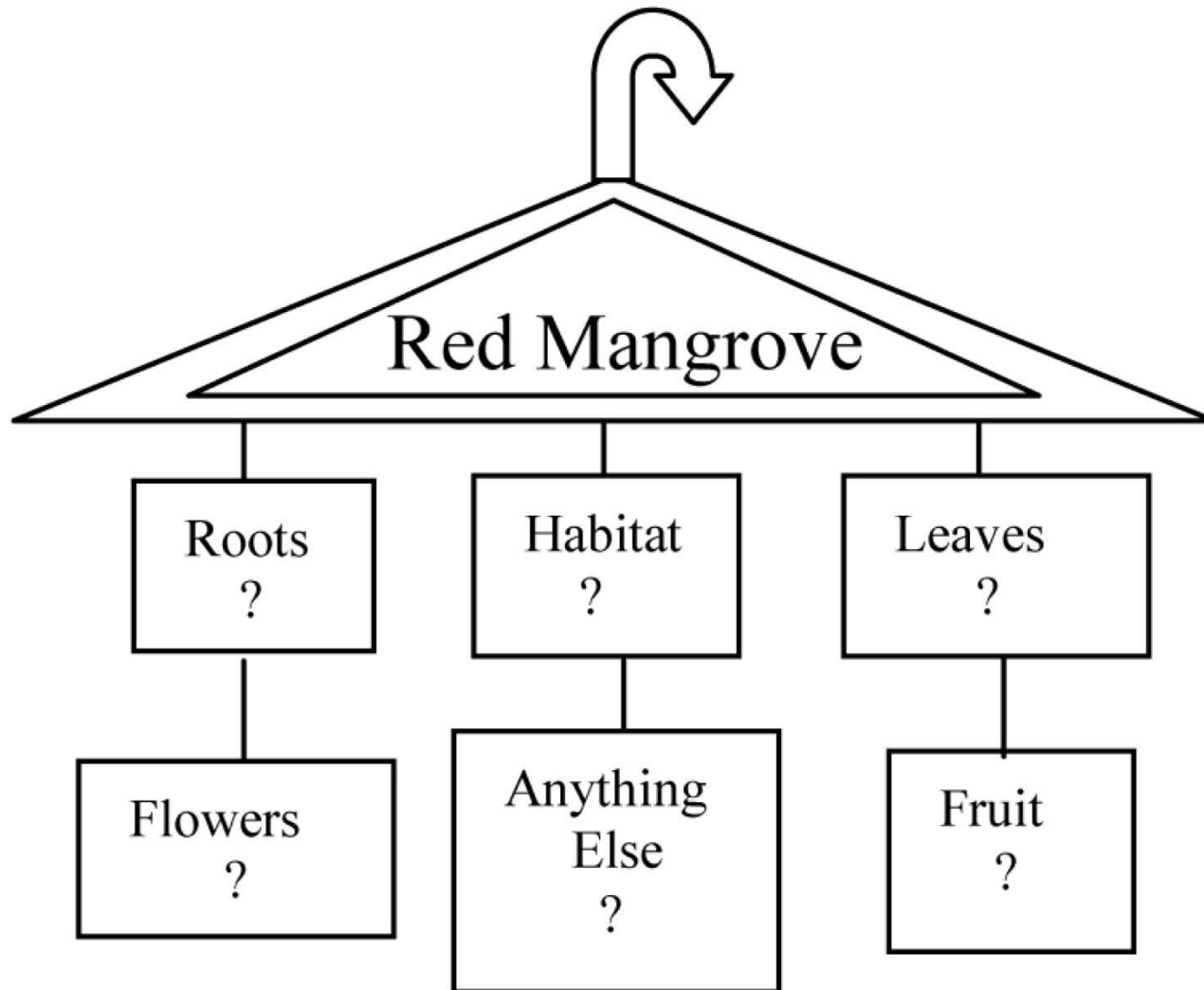
## 7. Classification of Organisms in a Mangrove Ecosystem – Teachers' Guide

### Some example identification keys

Characteristic	Red Mangrove	Black Mangrove	White Mangrove	Buttonwood
Habitat	 <p>along the shoreline, and in lagoons, in salty water</p>	 <p>usually to landward of red mangroves in shallower, salty water</p>	 <p>usually to landward of black mangroves in brackish water</p>	 <p>near the sea on rocks, beaches and salinas (not usually in water)</p>
Roots	 <p>thick stilt or prop roots and long, slender aerial roots</p>	 <p>no prop roots, surrounded by thin snorkel roots which stick out above the water</p>	 <p>thick knobby breathing roots, no prop roots</p>	 <p>no prop or breathing roots</p>
Leaves	<p>Appearance</p> <p>large, rounded and leathery</p>  <p>Position</p> <p>Opposite</p>	<p>long and thin, salt crystals on back</p>  <p>Opposite</p>	<p>rounded, sometimes with pinkish stems, 2 small bumps (salt glands) at base of leaf</p>  <p>Opposite</p>	<p>long and thin, 2 small bumps (salt glands) at base of leaf stem</p>  <p>Alternate</p>
Flowers	 <p>yellow-cream with 4 pointed petals</p>	 <p>white, four petals</p>	 <p>very small, white</p>	 <p>very small, in clusters</p>
Fruit	 <p>form torpedo-like plantlets on the tree</p>	 <p>about 1 inch long, flattened</p>	 <p>green and ribbed, in clusters</p>	 <p>in clusters in rounded heads</p>

Identification guide to the four most common species in mangrove ecosystems.

7. Classification of Organisms in a Mangrove Ecosystem – Teachers' Guide  
Some example identification keys



An example of an identification mobile