

63° 15' WEST

10'

907

UK45007 Dog Island and Middle Cay, Anguilla

The proposed area includes the islands and the surrounding reefs and marine area, the outer boundary coinciding with that of the Marine Park

DEPTHS in FATHOMS and FEET

Heights in Feet above Mean High Water

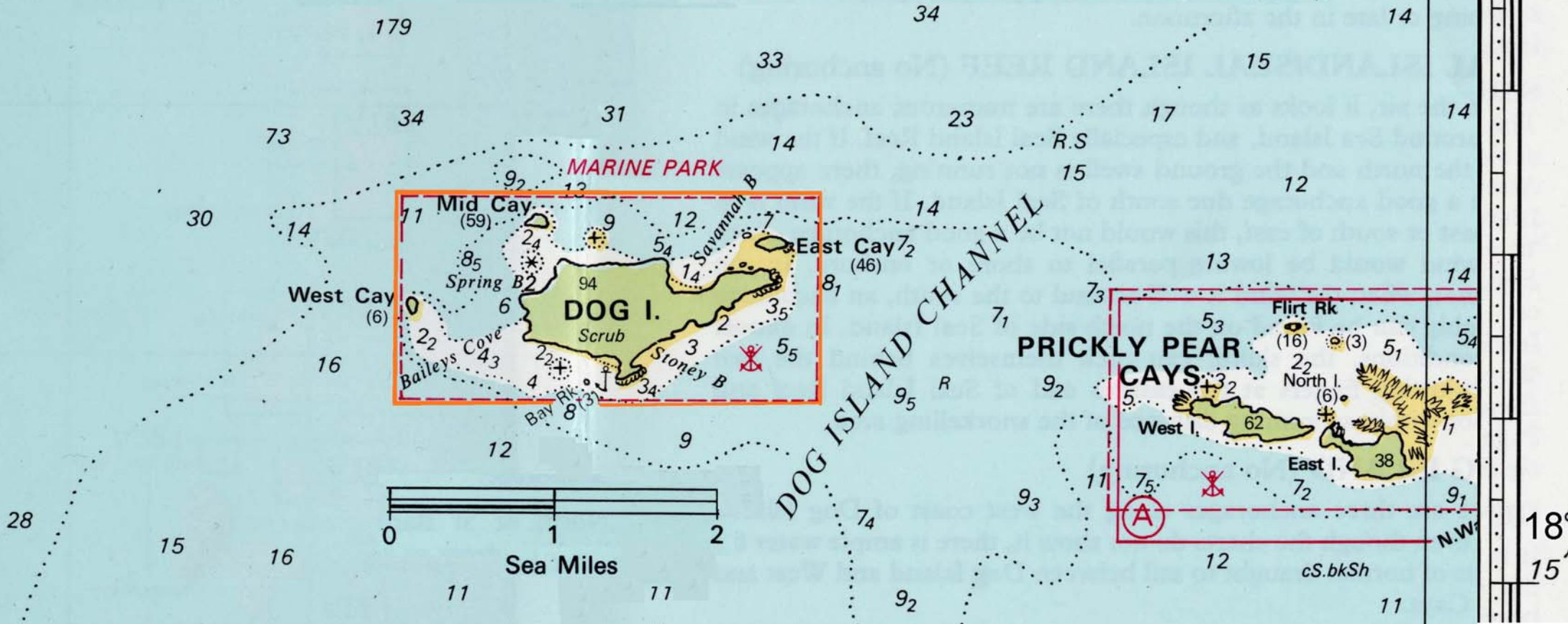
Areas with depths of below 1 fathom coloured *Yellow*

Depths of between 1 and 5 fathoms shown *White*

Depths over 5 fathoms coloured *Blue*

Projection – Mercator

Positions are referred to North American Datum (1927)



20'

18°
15'