

UK45008 Prickly Pear Cays, Anguilla

The proposed area includes the islands and the surrounding reefs and marine area, the outer boundary coinciding with that of the Marine Park

DEPTHS in FATHOMS and FEET

Heights in Feet above Mean High Water

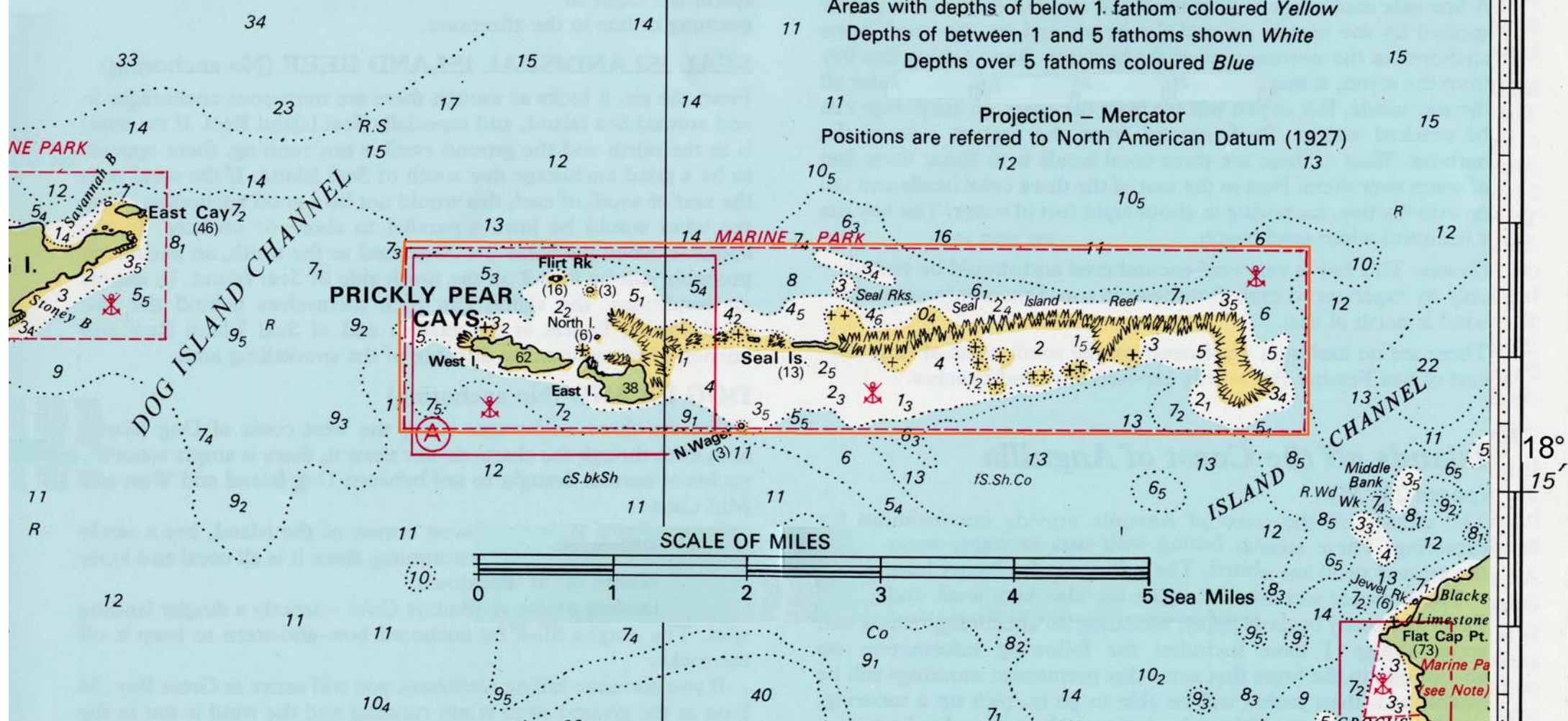
Areas with depths of below 1 fathom coloured Yellow

Depths of between 1 and 5 fathoms shown White

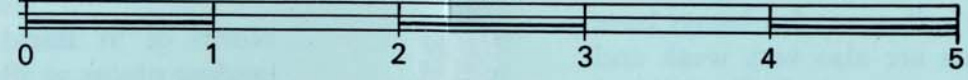
Depths over 5 fathoms coloured Blue

Projection – Mercator

Positions are referred to North American Datum (1927)



SCALE OF MILES



Blackg Limestone Flat Cap Pt. (73)
 Marine Pa (see Note)
 5: CROCUS