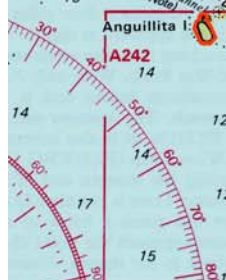
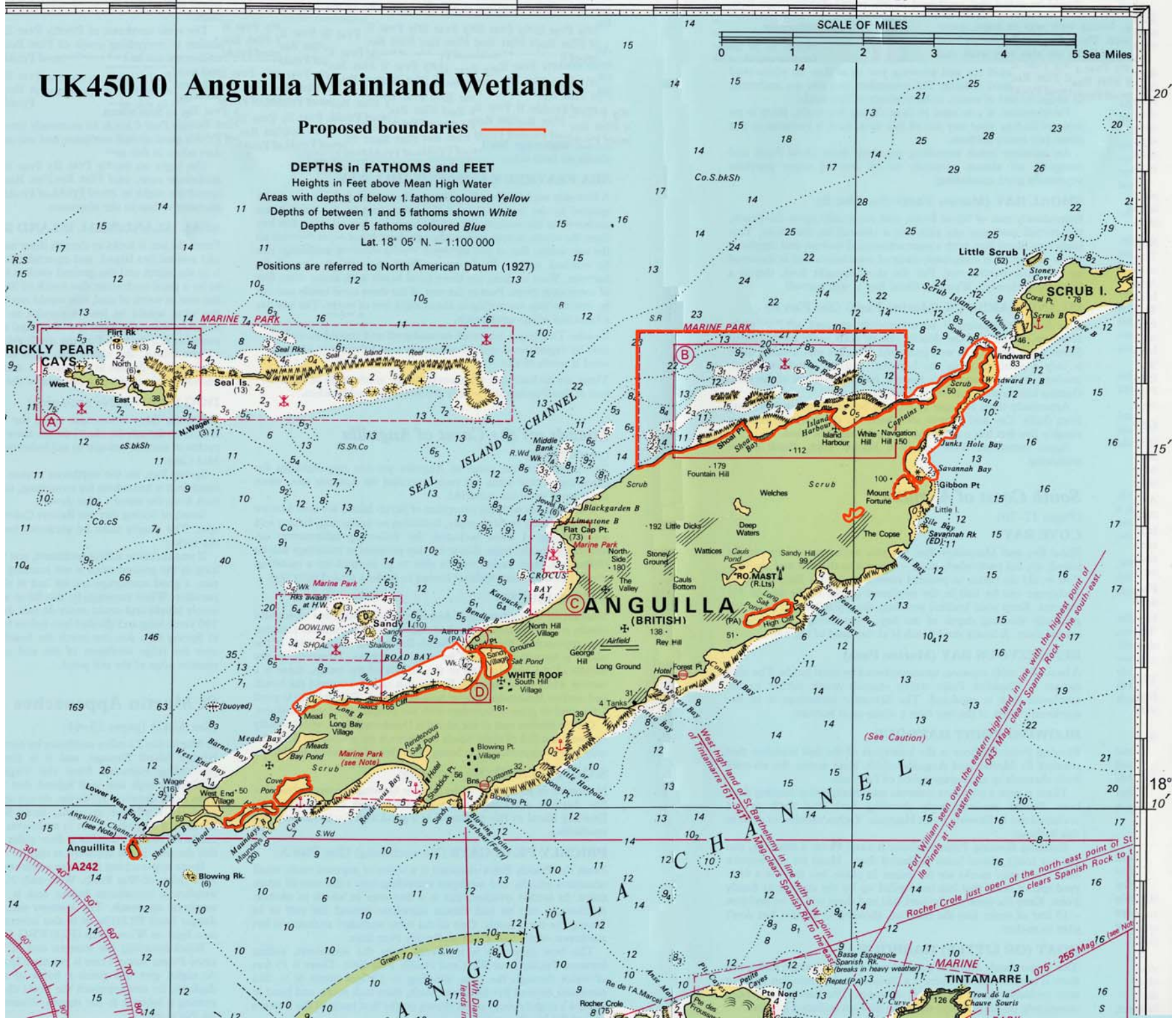
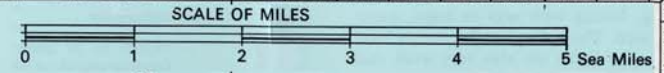


UK45010 Anguilla Mainland Wetlands

Proposed boundaries —

DEPTHS in FATHOMS and FEET
 Heights in Feet above Mean High Water
 Areas with depths of below 1 fathom coloured **Yellow**
 Depths of between 1 and 5 fathoms shown **White**
 Depths over 5 fathoms coloured **Blue**
 Lat. 18° 05' N. - 1:100 000

Positions are referred to North American Datum (1927)



West high land of St. Bartholomew in line with S.W. point of Tintamarre 157°-157° 30'
Fort William seen over the eastern high land in line with the highest point of the Pinnac at its eastern end 045° Map clears Spanish Rock to the south-east
Rocher Crole just open of the north-east point of St. Vincent 075° - 255° Map 76 (see Note)

(See Caution)